

Update version 6.0.223 to version 7.0

Febdok version 7 can only be updated from version 6.0.223. If you have an older version than this, you must upgrade to it first.

Febdok now comes in two new versions, 32-bit and 64-bit. Read more about which version you can use in the "**Febdok 32-bit or 64-bit**" guide on our website.

Febdok is now installed with a newer version of Access that has a file extension of .accdb. This means that the system requirements for Febdok have changed.

System requirement for Febdok 7, 32-bit:

- .NET 4.8
- Access database engine 2016 32-bit or later
- Internet access to license and check for updates

System requirement for Febdok 7, 64-bit:

- .NET 4.8
- Access database engine 2016 64-bit or later
- Internet access to license and check for updates

Before you start, it's always a good idea to do a backup of Febdok. Go to "Registry" and select "Backup of user data". This will create a .frg file that is saved in the backup folder.

The Update

You can download the installation file and guides on the Febdok website.

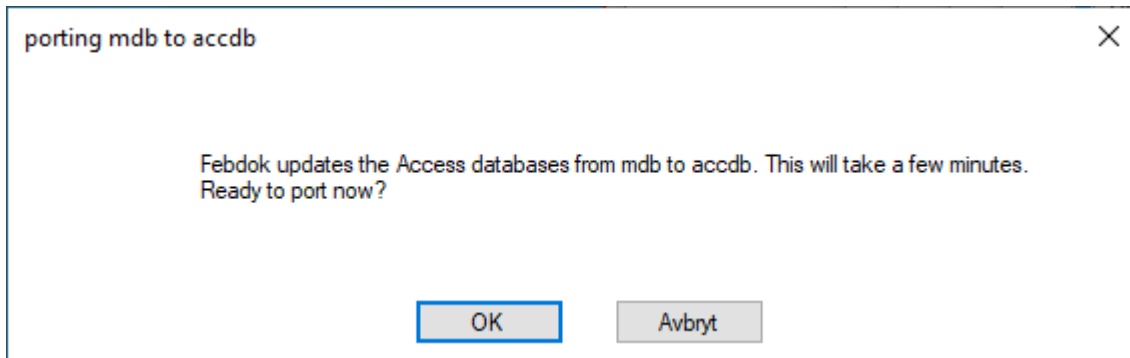
The update is a major upgrade, which means that the installation program does not know where Febdok is installed, and all files will be replaced with version 7 files.

- **Server og client:**
 - **Server:** If you have Febdok server installed, you must place the installation in the same location as 6.0.223. You can find this UNC path by opening FebdokInstalldir.txt in the "Klientsetup" folder in the Febdok directory on the server.
 - **Client:** The client has been improved, and you must uninstall the old client and use the new one. You can find this in the "klientsetup" folder in the Febdok directory on the server.
- **Local (single-user):**

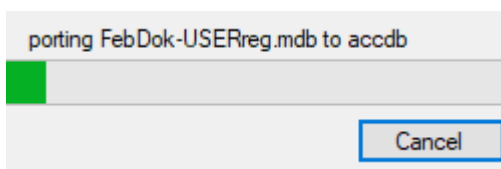
If you have not changed the location, the update will select the standard folder for local installation.

Starting Febdok after the update:

When you start the program after the update, you will be asked if you want to port the Access databases from .mdb to .accdb. If you have Febdok databases on SQL server, you will not be asked to port the database.



Figur 1 You need to convert the database to accdb format in order to use Febdok. Click OK.



Figur 2 Porting is in progress.

When the porting to accdb is complete, Febdok will start up.



Figur 3 Log in with your user account.