

KLIENT

Installation of FEBDOK Client

This is a guide for installing the FEBDOK client, version 7.0. This installation is performed on Windows 10. If you do not have Windows 10, the screenshots might differ slightly, but the principles remain the same.

System requirements for Febdok version 7:

- Access database Engine 2016 32- or 64-bit
- .Net 4.8
- Internet access for licensing

You can find the installation file for the client on the server where FEBDOK is installed. Here, you'll find a folder named KlientSetup. Inside, there are 2 files:

- **Febdok_Klient.msi** or **Febdok_Klient_x64.msi** is the installation file. It must be executed from the same location where the text file FebDokInstallDir.txt is located.
- **FebDokInstallDir.txt** contains the UNC path to the FEBDOK installation and language settings.

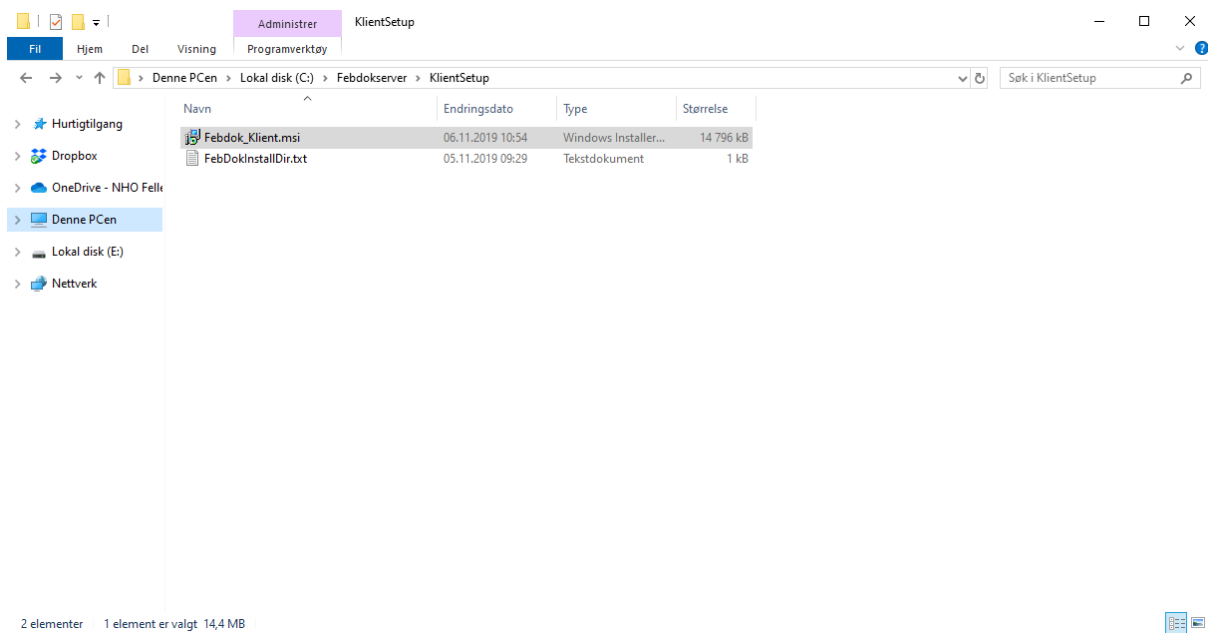


Figure 1

This guide is about a regular client installation, and Febdok_Klient_x64.msi is used in this guide. This must be run from the same location as FebDokInstallDir.txt.

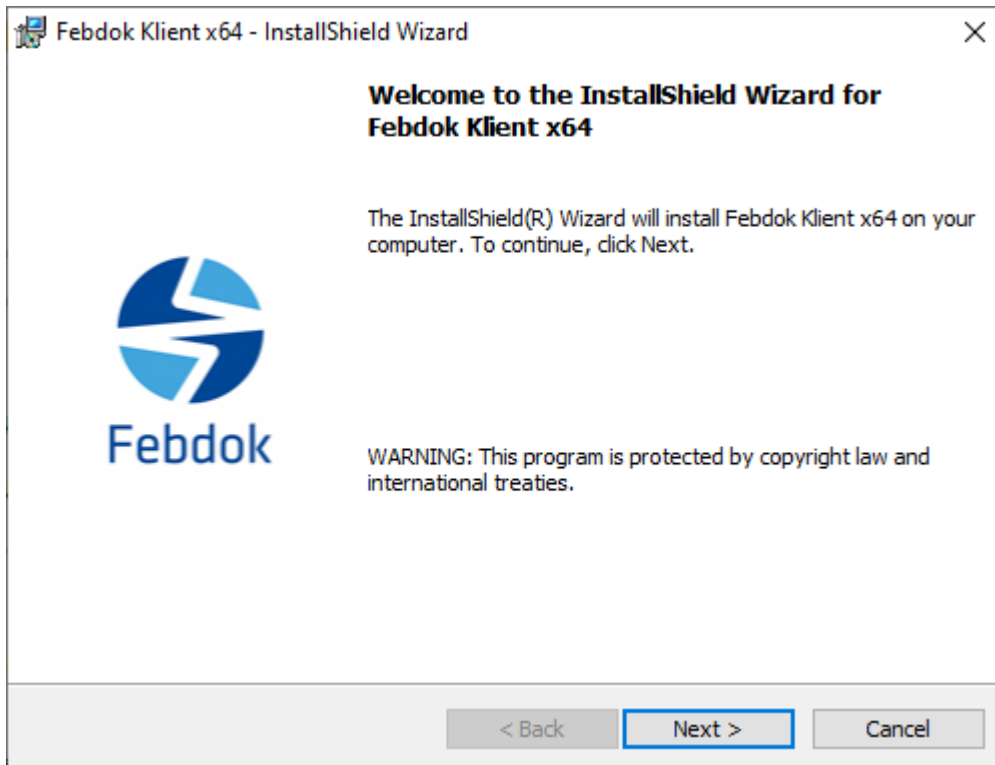


Figure 2

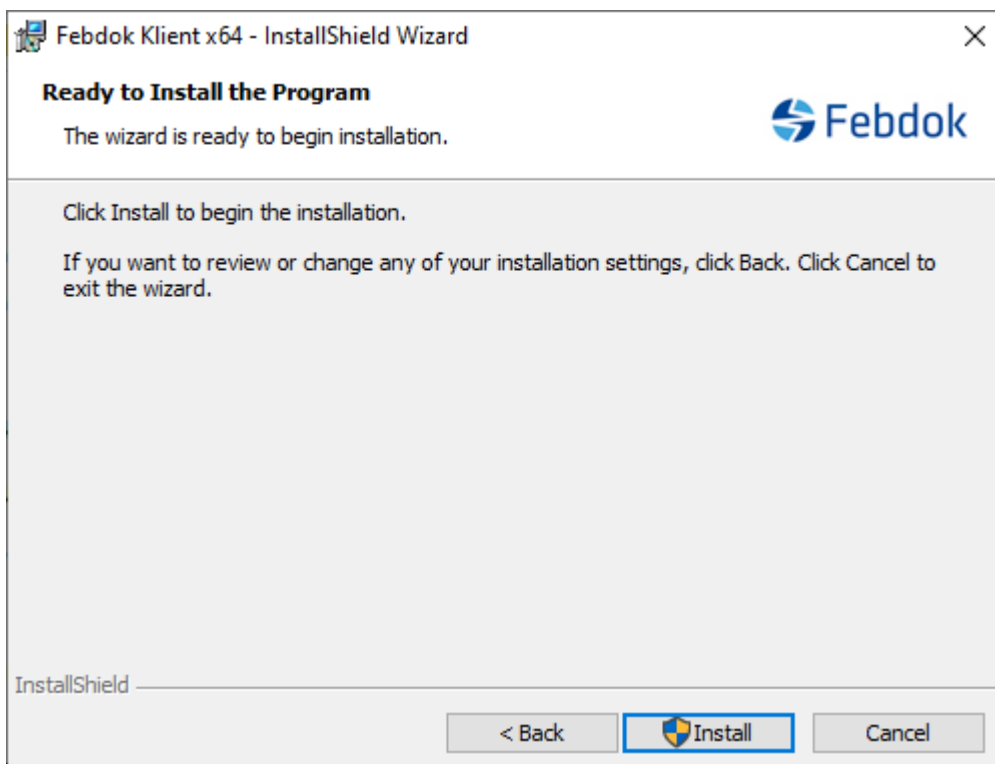


Figure 3 Select the program provider. This is important and affects automatic updates

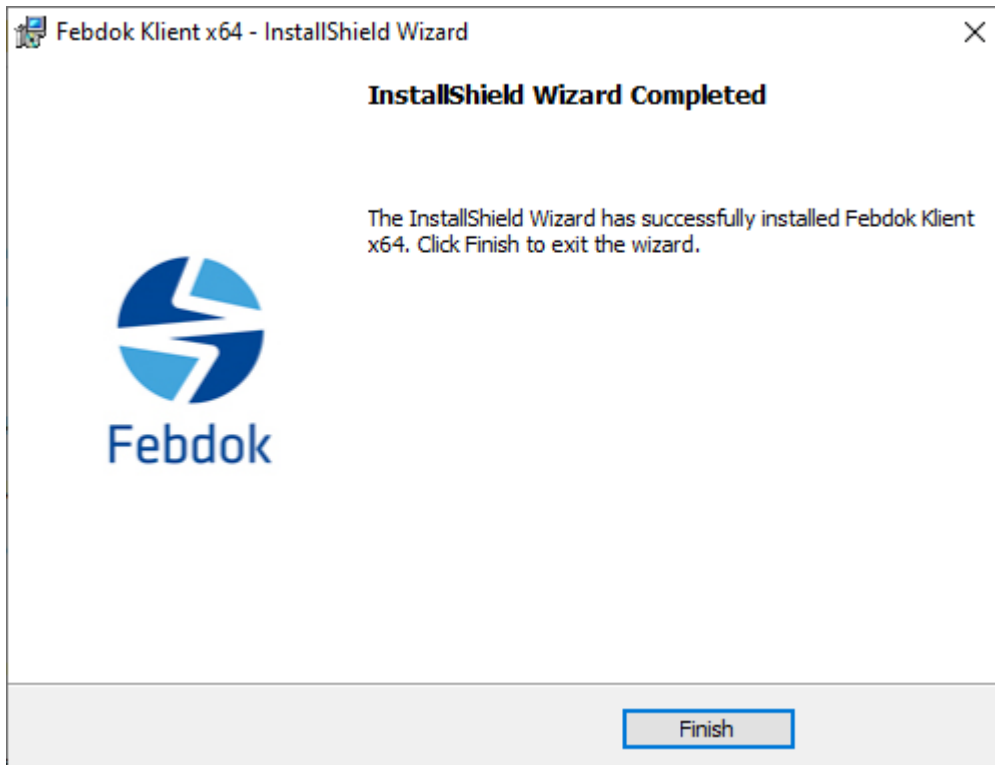


Figure 4 Click Finish



Figure 5 Double-click to start Febdok



Figure 6 Logg in to Febdok

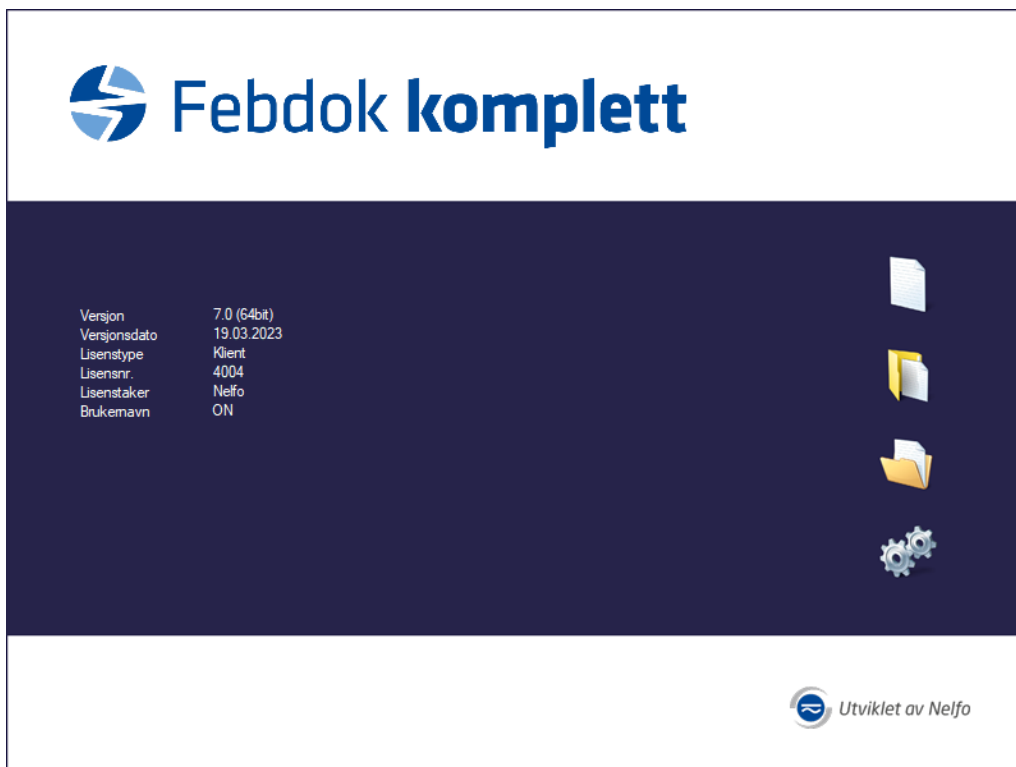


Figure 7 You are now logged in and will see the startup screen for Febdok