

# Exporting installation to file

When exporting the installation to a file, all data related to the installation is transferred to a file (.fdw). Each installation gets its own file.

This is a good method to preserve data if multiple licenses or databases are to be merged.

Here is how to export the installations to a file.

1. Log in to Febdok with your user
2. Go to Installation register
3. Select all installations you want to export. You can select multiple installations by holding down the Ctrl key and clicking on an installation. You can also hold down the Shift key and select the top and bottom installations. This will select all installations in between.

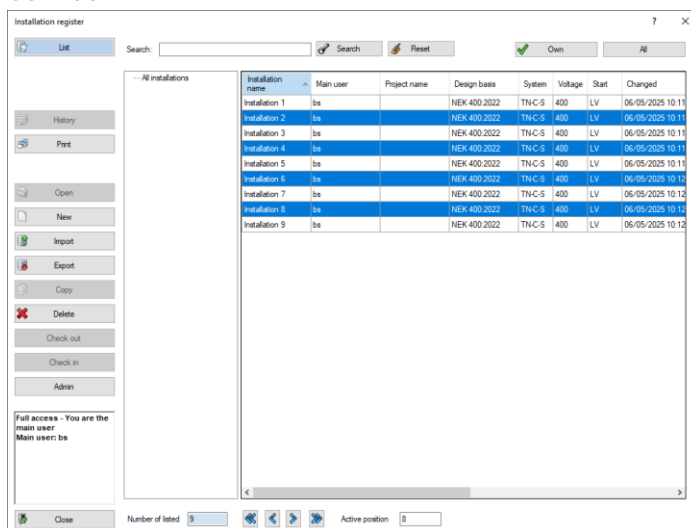


Figure 1 Installations selected with Ctrl + left click.

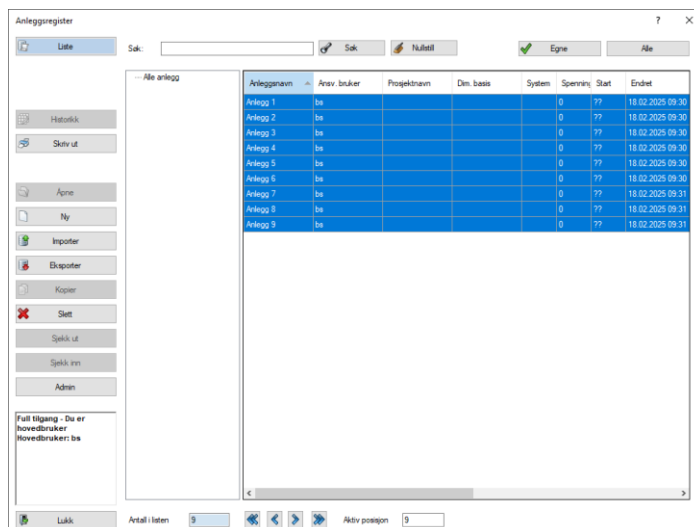


Figure 2 The installations are selected by holding down the Shift key and left-clicking on the first and last installations.

#### 4. Click the export button

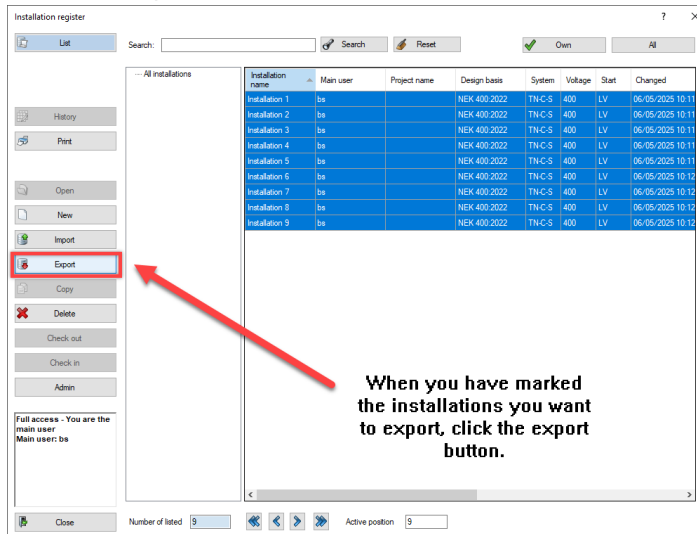


Figure 3 Click the export button.

#### 5. Choose the folder where you want to save the installations.

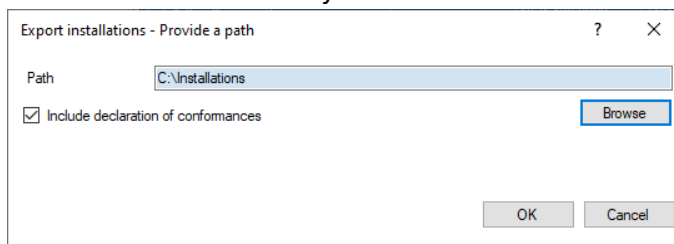


Figure 4 The folder selected here is not a default folder.

#### 6. Export is complete.

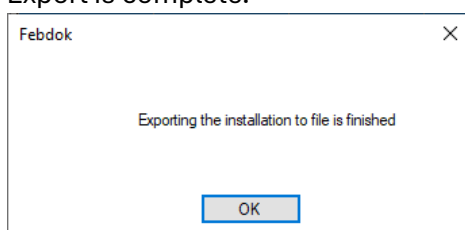


Figure 4 Export is complete. Click OK.

#### 7. Go to the folder selected in figure 4, and you will find the installations you exported.

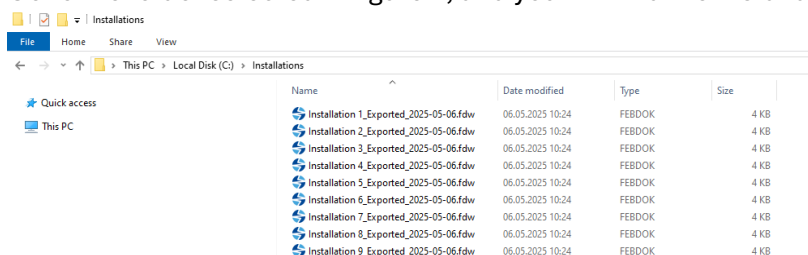


Figure 5 The installations have been exported to the folder.

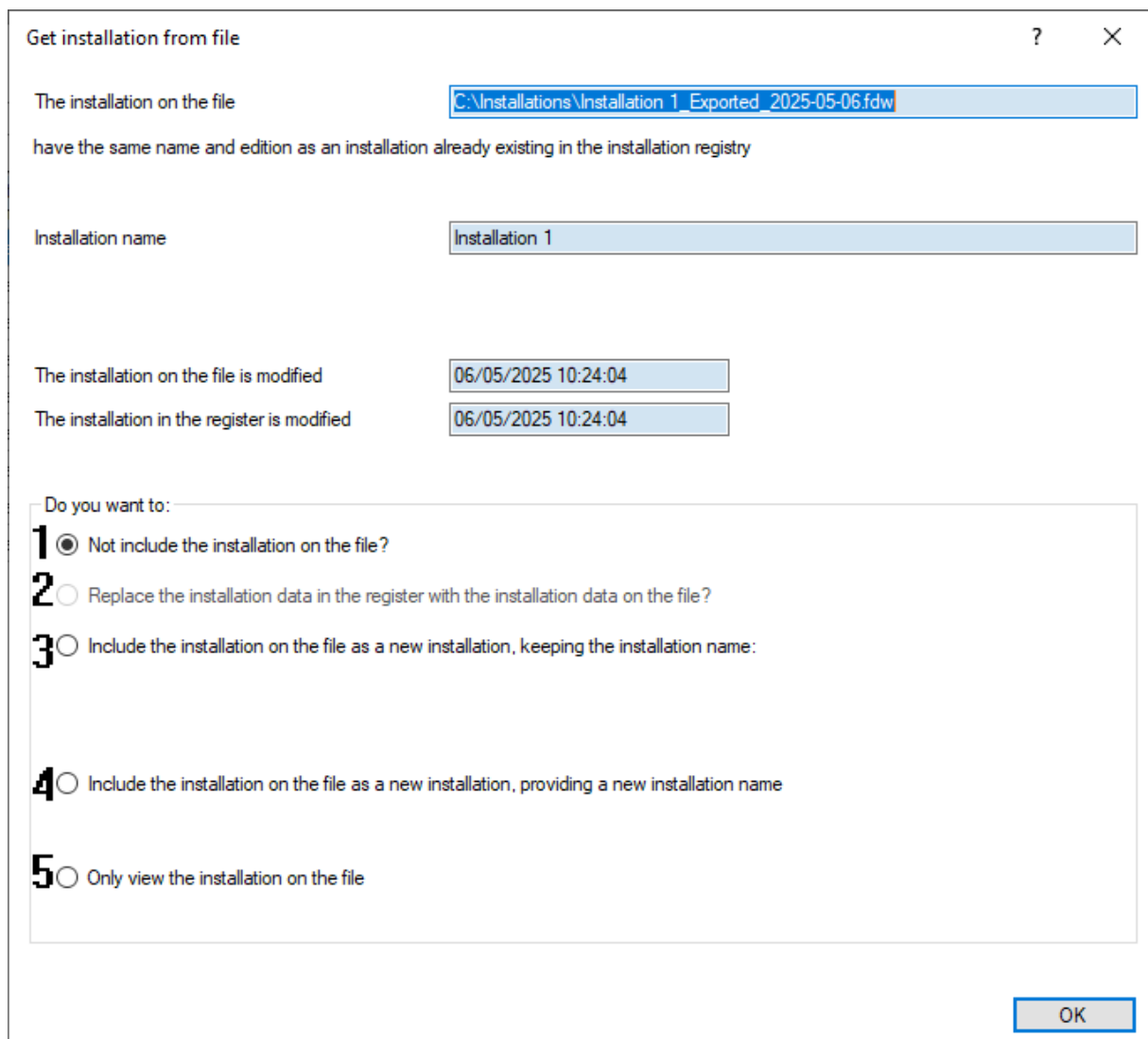
## Importing Installations from files.

All installations (.fdw files) must be imported through the installation registry. If the installation already exists, you will be asked how you want to handle the import.

Installations can be imported one by one or you can select many at once.

### Import of one installation.

If you import an installation that you do not already have, the installation will be imported directly. If you import an installation where the installation name already exists, you will see this dialog:



Get installation from file

The installation on the file

have the same name and edition as an installation already existing in the installation registry

Installation name

The installation on the file is modified

The installation in the register is modified

Do you want to:

- 1 ☒ Not include the installation on the file?
- 2 ☐ Replace the installation data in the register with the installation data on the file?
- 3 ☐ Include the installation on the file as a new installation, keeping the installation name:
- 4 ☐ Include the installation on the file as a new installation, providing a new installation name
- 5 ☐ Only view the installation on the file

OK

Figure 6 You get 5 choices,

You have to choose:

1. "Not include the installation on the file" means that you don't want to do anything to this import. OK will terminate the import
2. Option 2 is not available in this case. This only applies to checked-out installations that are to be checked in. Then you can replace (overwrite) the installation you have in the installation registry. When checking out, the installation ID (GUID) is preserved in the exported installation. This will be activated if the Installation GUID in the file already exists in the installation register.
3. Here you can choose to add a version number to the installation. The installation name is unique and cannot be duplicated. The installation will be imported with a new installation ID (GUID) and version number.

☒ Include the installation on the file as a new installation, keeping the installation name:

Installation name	<input type="text" value="Installation 1"/>
(New) Version number	<input type="text" value="1"/>

4. Here you can choose to assign a new name to the installation. The installation will be imported with a new name and a new installation ID (GUID)

☒ Include the installation on the file as a new installation, providing a new installation name

New installation name	<input type="text" value="Choose an installation name"/>
-----------------------	--

5. If you choose "Only view the installation on the file" the installations will open in Febdok without being imported into the installation registry (database). You cannot make changes to the installation.

## Import of several installation files at ones

You can choose to import multiple installation files at once. This is done by clicking 'Import' in the installation registry and selecting multiple files.

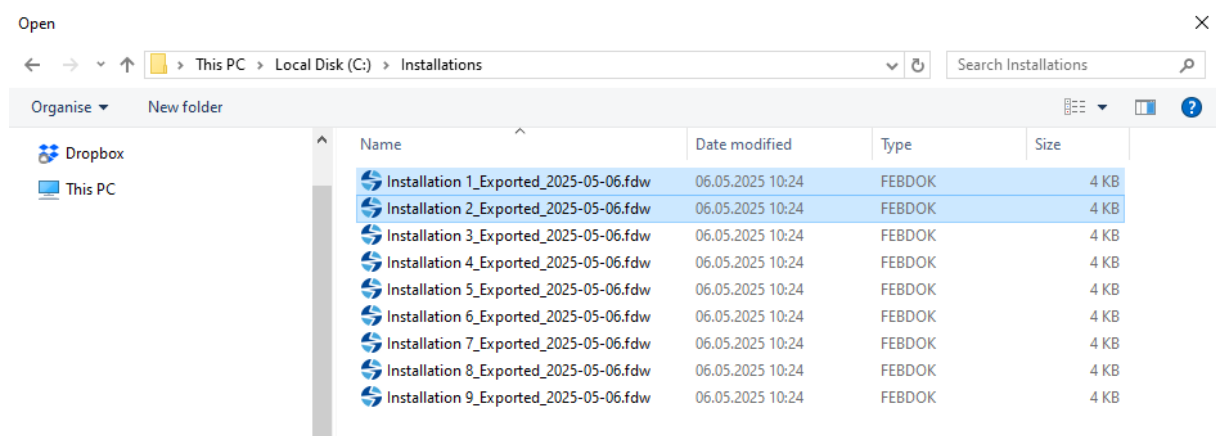


Figure 7 Select multiple files for import

If you select multiple installation files, you will see a different dialog where you need to make pre-selections for these installations. This appears when selecting 2 or more installation files.

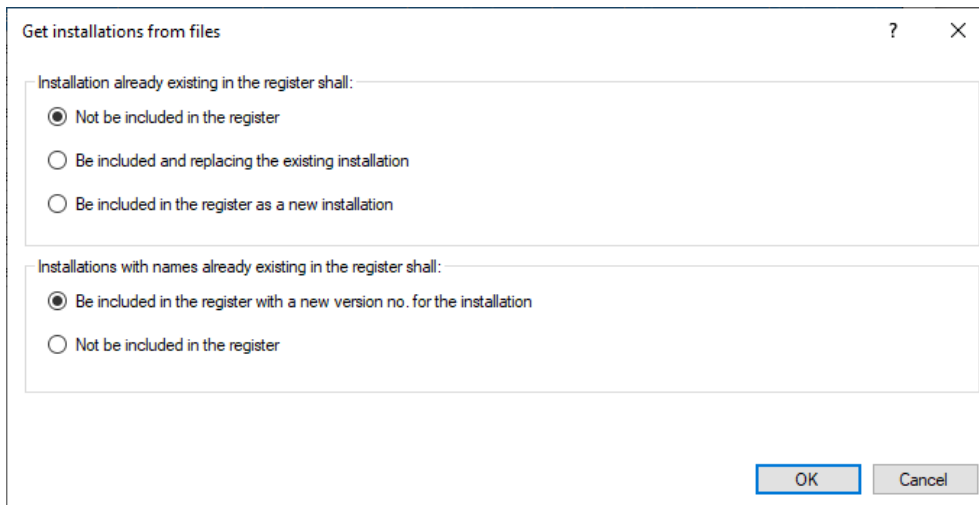


Figure 8 Here you need to make pre-selections for how the installation files should be handled during import.

**We recommend the following setup:**

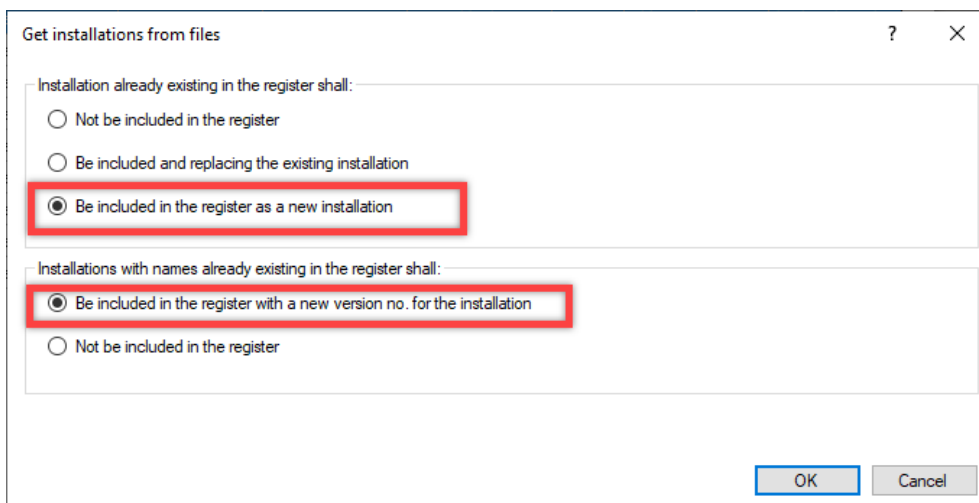


Figure 9 A recommended choice.

- **Be included in the register as a new installation:**

This means that all installations are imported as new installations with new installation IDs (GUIDs). Nothing will be overwritten.

- **Be included in the register with a new version no. for the installation:**

This means that if the installation name already exists, a version number will be added after the name.

If you choose this (recommended), all installations will be imported (may get a version number in the name), and nothing will be overwritten or excluded.